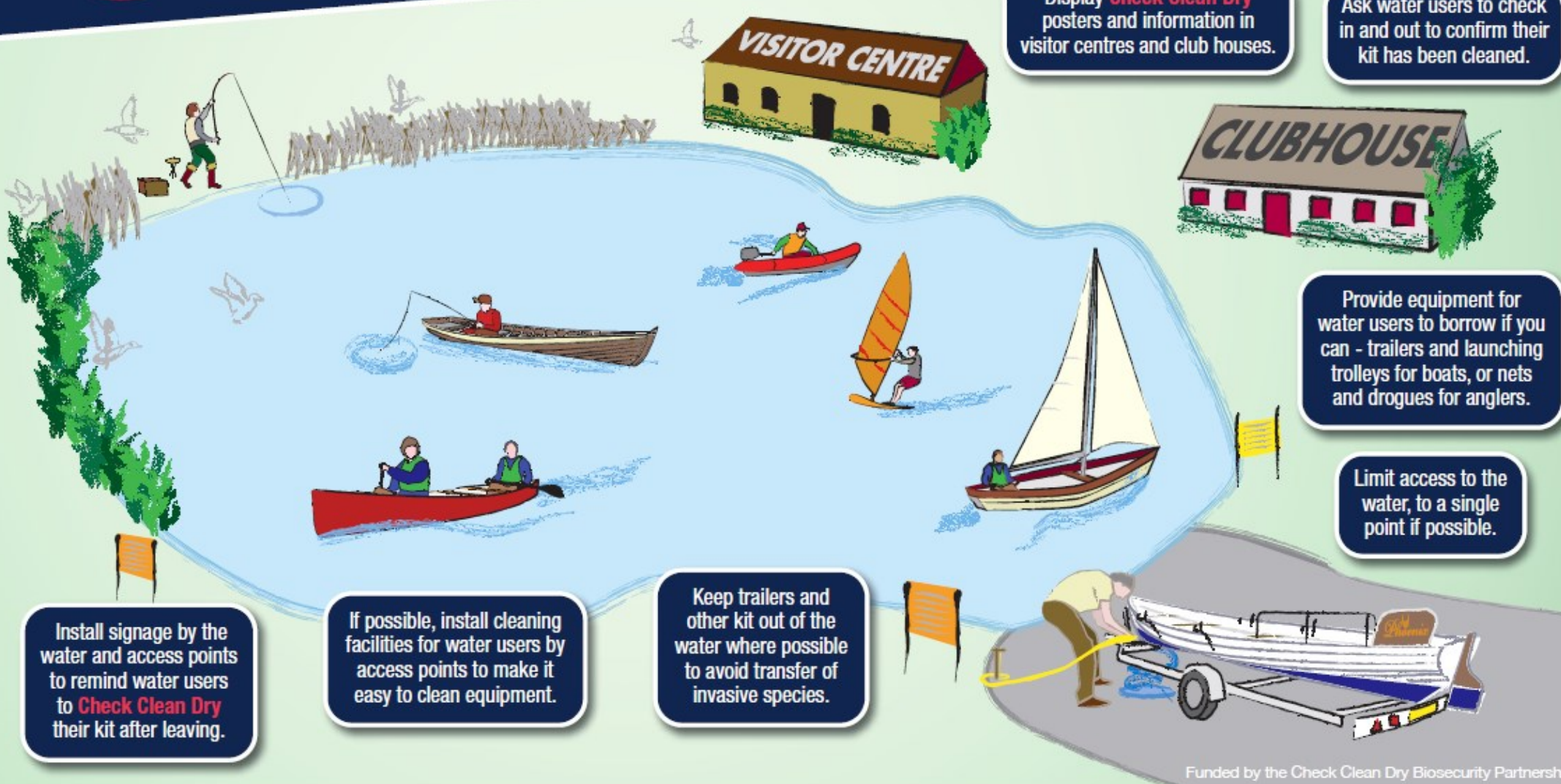


# STOP THE SPREAD

Invasive species can be a serious problem in lakes, rivers and other waterbodies. They can damage boats and other equipment, harm wildlife and the environment, and invasive plants can clog up waterbodies and block banks.

Here are some ways you can help to protect the waterbody you manage:



Display **Check Clean Dry** posters and information in visitor centres and club houses.

Ask water users to check in and out to confirm their kit has been cleaned.

Provide equipment for water users to borrow if you can - trailers and launching trolleys for boats, or nets and drogues for anglers.

Limit access to the water, to a single point if possible.

Keep trailers and other kit out of the water where possible to avoid transfer of invasive species.

If possible, install cleaning facilities for water users by access points to make it easy to clean equipment.

Install signage by the water and access points to remind water users to **Check Clean Dry** their kit after leaving.

Funded by the Check Clean Dry Biosecurity Partnership.