

# Marine Pathways Project



## DEFRA Workshop on Invasive Non-Native Species

9<sup>th</sup> July 2014



Gabe Wyn (NRW) and Jan Maclennan (Natural England)

[www.naturalengland.org.uk](http://www.naturalengland.org.uk)  
[www.naturalresourceswales.gov.uk](http://www.naturalresourceswales.gov.uk)

**Marine Pathways**

Managing marine non-native species



# History of LIFE + Bid

- The project developed out of GB and Irelands response to the arrival of the Carpet seasquirt in Holyhead.
- The main pathways were identified as recreational boating, aquaculture, fisheries, shipping, and off-shore energy.
- Key legislative drivers included the Habitats Directive, Marine Strategy Framework Directive, Water Framework Directive and the EU Reg.



# Aims of original LIFE + bid

- help prevent the introduction and spread of marine alien species by raising awareness of this issue and encouraging behaviour change with key stakeholders
- increase our capacity to respond rapidly to the introduction or spread of marine alien species
- improve biosecurity in high risk and ecologically sensitive areas so that the introduction and spread of marine alien species is reduced
- pilot a range of approaches to the control of invasive marine alien species

*Caprella mutica*  
Japanese skeleton  
shrimp



*Eriocheir sinensis*  
Chinese mitten crab



*Crepidula fornicata* *Botrylloides violaceus*  
Slipper limpet colonial sea squirt



# Marine Pathways Project – 2013 to 2015



- Development of protocols and methodology for the detection of INNS both inshore and offshore
- Identification of locations at high risk of the introduction of INNS to facilitate risk based monitoring and management
- Raising awareness of marine INNS with stakeholders
- Work with stakeholders developing codes of practice to reduce the risk of introduction and spread
- Research strategies for the control and eradication of marine INNS



## Pathways Advisory Groups:

- Commercial fisheries
- Commercial aquaculture
- Shipping and offshore industry
- Recreational water use

# Volunteer champions



Development of a network of volunteers to 'champion' marine INNS issues and raise awareness amongst sea users

- **Outdoor Activities Centres & Instructors**
- **Environmental Professionals & Volunteers**
- **Clubs & General Public**

Testing approach with view to spreading wider across GB and Ireland



# Early warning networks

Establishing and trialling early warning networks – inshore and offshore



# Demonstration projects

Running demonstration projects on the control and management of a suite of invasive marine species including

e.g. Chinese mitten crab in the Dee estuary – testing effectiveness of different traps/nets



e.g. carpet sea squirt – testing methods for removal at aquaculture sites in Ireland



## Biosecurity for marina operators and boat owners

**GUIDANCE FOR PRODUCING SITE AND OPERATION-BASED PLANS FOR  
PREVENTING THE INTRODUCTION OF NON-NATIVE SPECIES**

Final Version: 21 January 2014



- In water cleaning guidance
- Training/awareness events
- Incorporation in gold anchor award schemes



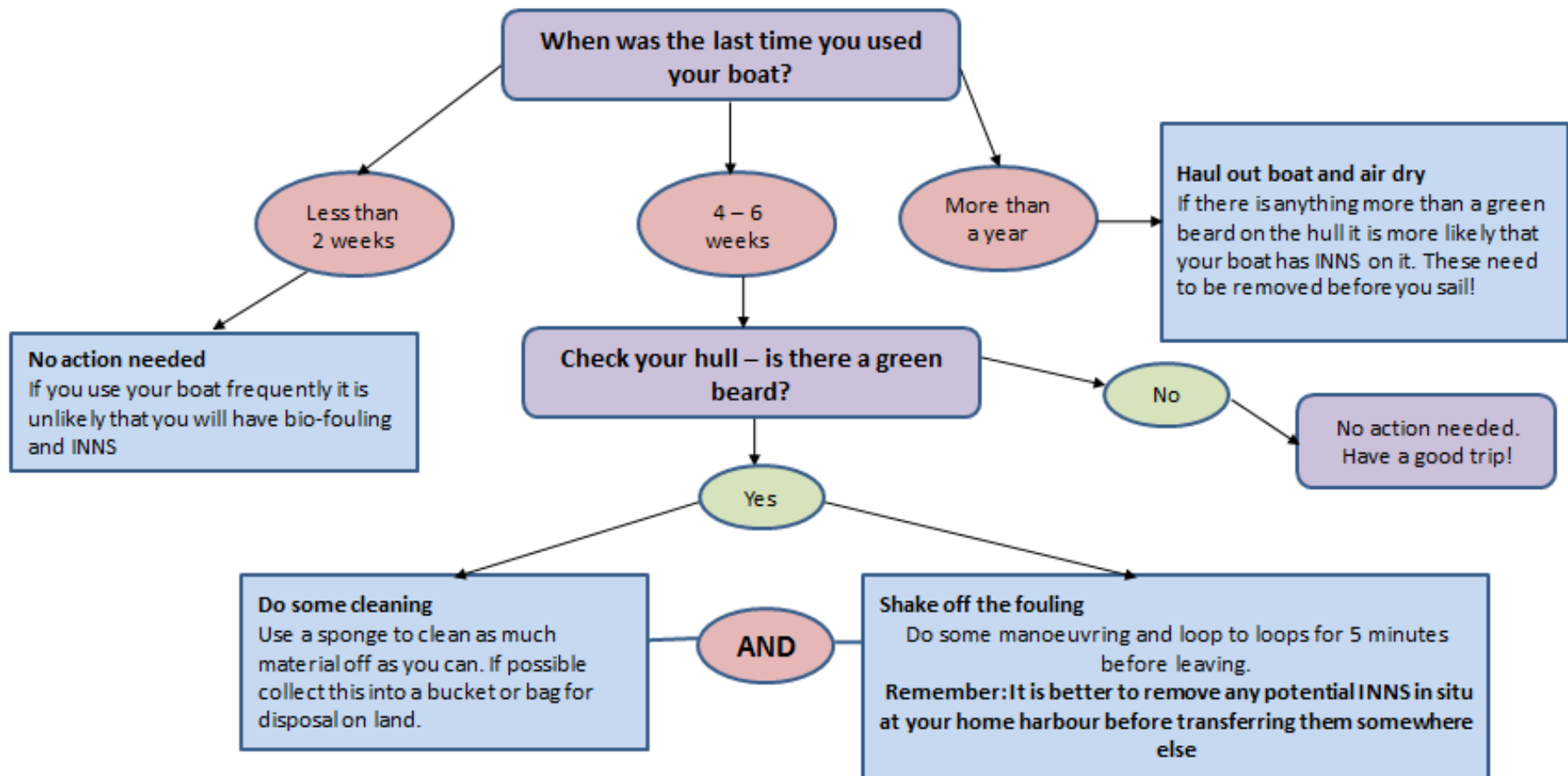
# Marine Pathways

## Use your boat!

- It is best practice to haul out and antifoul your boat annually to prevent bio-fouling.
- The more you use your boat the less likely species will accumulate and the more effective your antifoul will be.
- Try to use your boat at least every 2 weeks over summer/growing season. Even if you are just visiting your boat – take it for a short run away from your berth or mooring. .

## Before you leave

If you haven't frequently used your boat you may have accumulated bio-fouling which could include invasive non-native species (INNS).



## Biosecurity for aquaculture

- Incorporating biosecurity planning guidance for reducing spread and introduction of INNS into existing FHI Shellfish and Biosecurity Measures Plan
- Already in place so makes sense not to duplicate
- Incorporate current guidance and messages available



## 1. Look at best practice guidance examples:

- Carry out rapid visual check of stock prior to release at site for any 'hitch-hikers'
- Report any organism you suspect may be a high risk species.
- If mooring lines become fouled remove them from the water, dispose of fouling in dustbin or skip and leave the ropes to dry out for a period greater than 48 hours.
- Treat boats with antifoul

## 2. Sense check with industry

- Agree with proposals?
- What challenges would be faced to implement?
- Are these the right messages?
- Do we need more research?
- How should we monitor uptake?

## 3. Publication and dissemination

Thank you



Web pages are under development which the GB Non Native Species Secretariat website will host. Go to 'projects' → 'marine pathways project'

[www.nonnativespecies.org](http://www.nonnativespecies.org)

If you would like to join the Pathways Advisory Group directly please contact: Hannah Tidbury: [hannah.tidbury@cefas.co.uk](mailto:hannah.tidbury@cefas.co.uk)

Regular newsletters produced: If you would like to receive these please contact Hannah.