

# Invasive non-native species & WFD

Mark Diamond

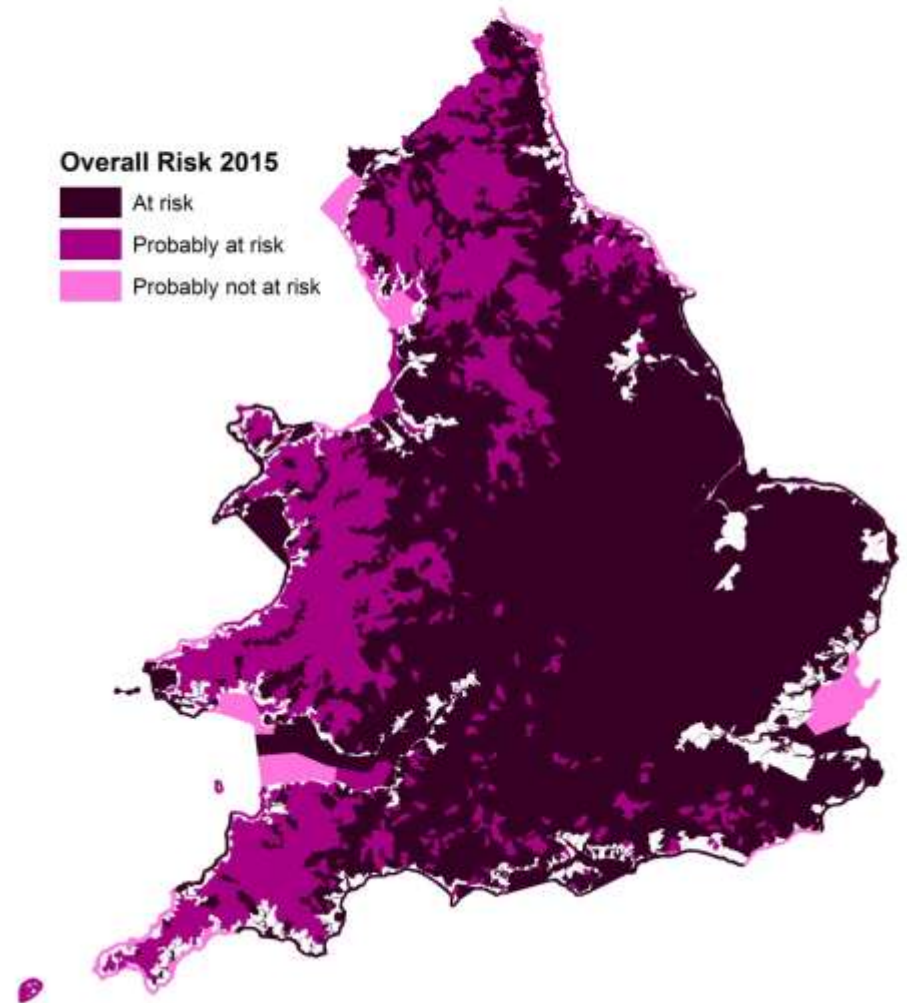
# INNS and WFD

- ➔ A significant pressure
- ➔ Used within classification
- ➔ Failure to achieve good status

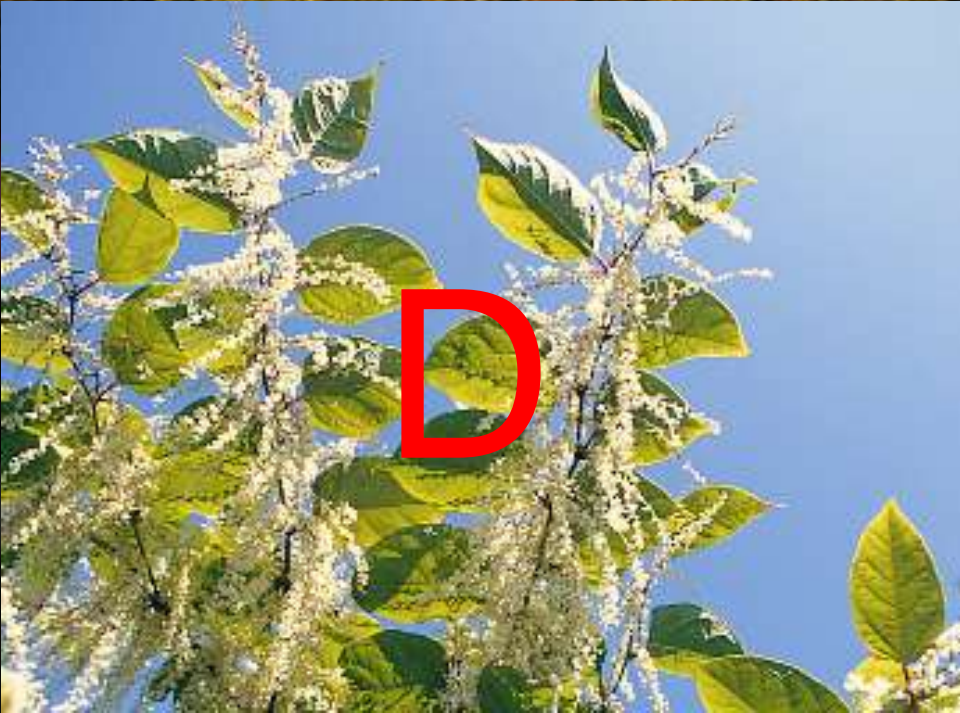
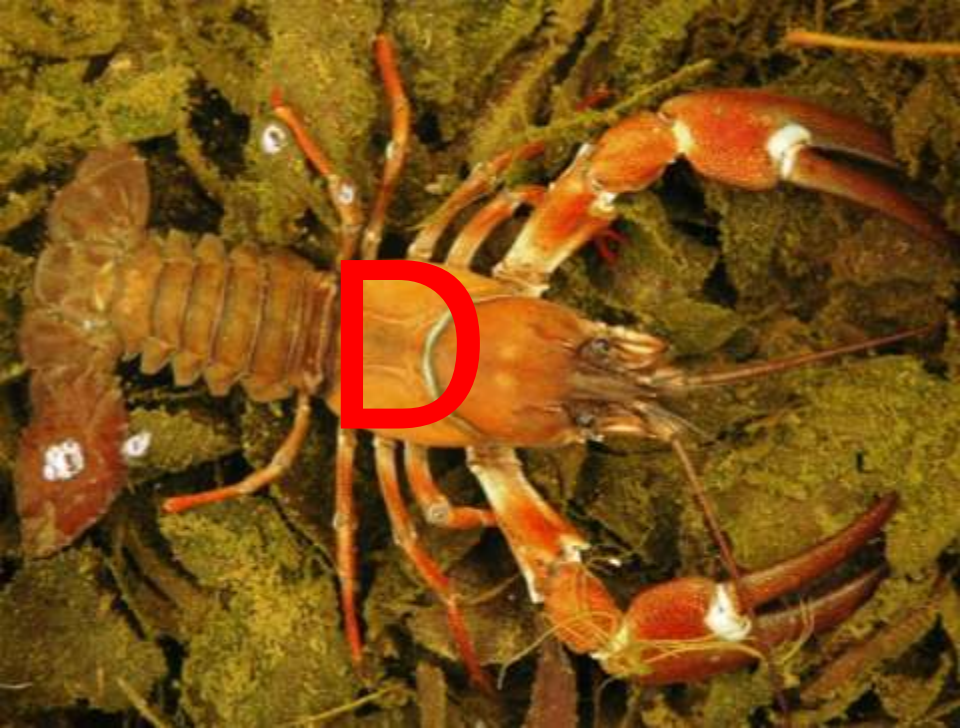


# Assessing Risk

- ➔ Expert led
- ➔ Assessed over 30 species
- ➔ 70% of water bodies across all surface categories in England are at risk of deterioration



Grabowski



# Working with others

- ➔ GB Non-Native Species Secretariat
- ➔ UKTAG Alien Species Group
  - ➔ SEPA, IFI, DOENI, Natural England, CEFAS, EPA Ireland, SNH, NRW, NBN
- ➔ Local Action Groups
- ➔ NGOs, water users, etc.



