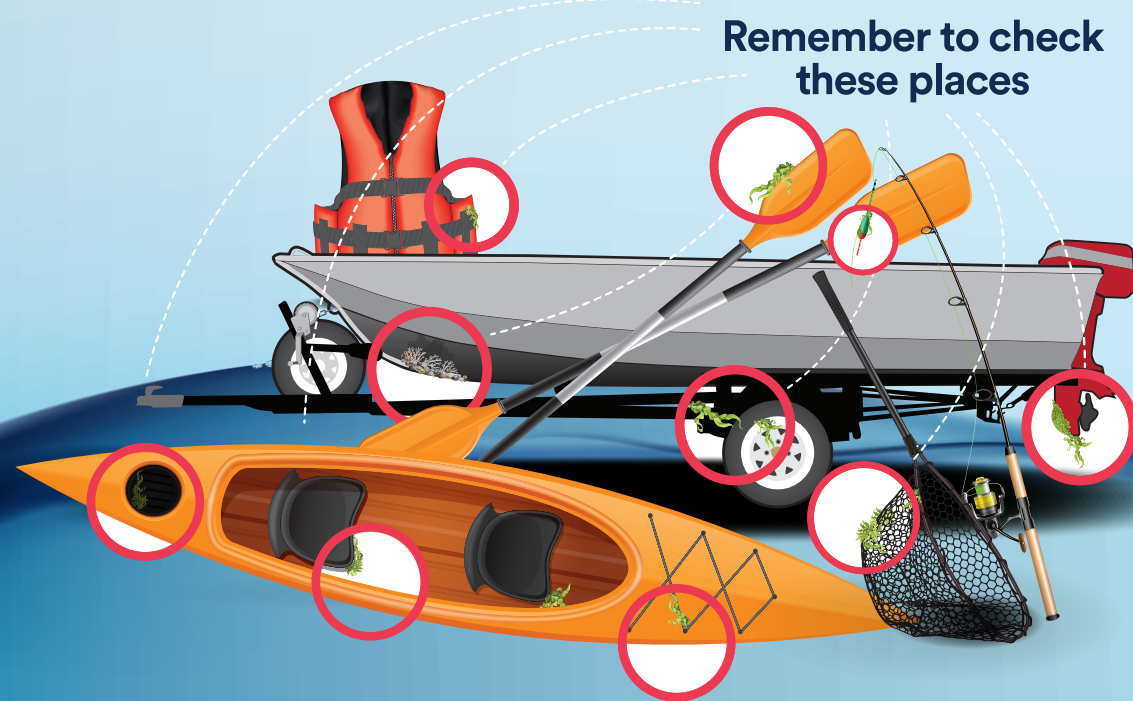
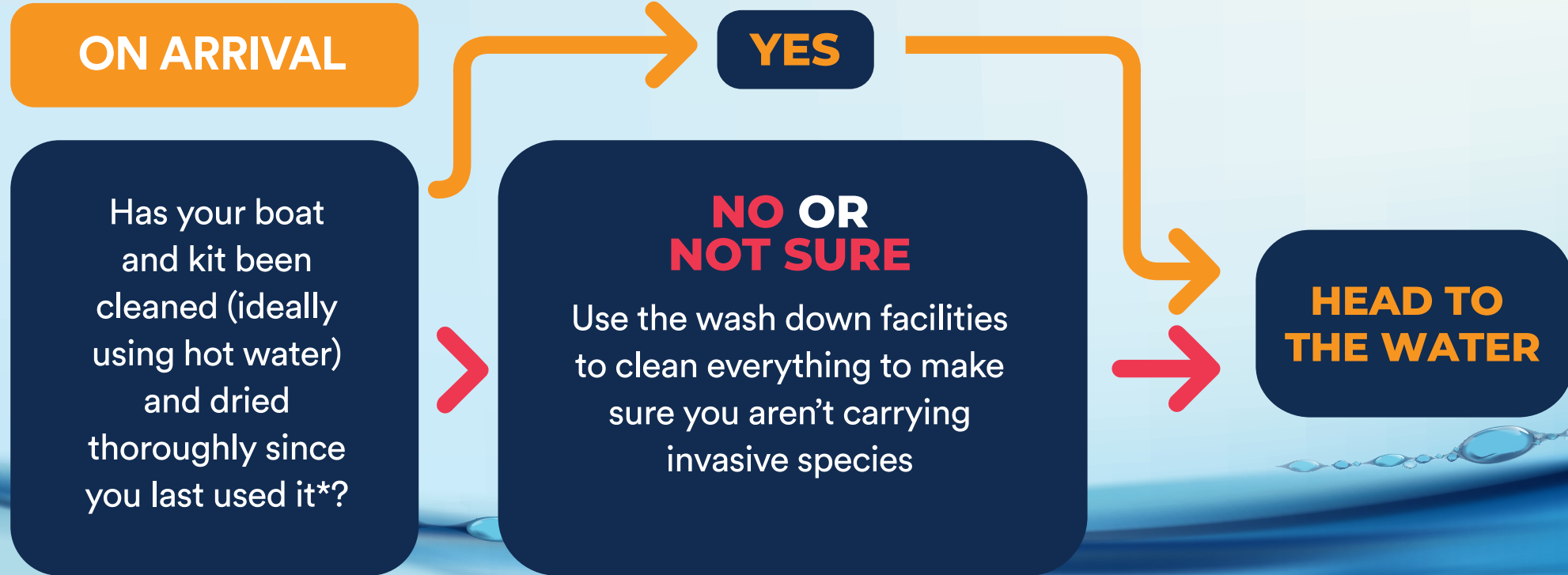


WASHDOWN STATION



Remember to check these places

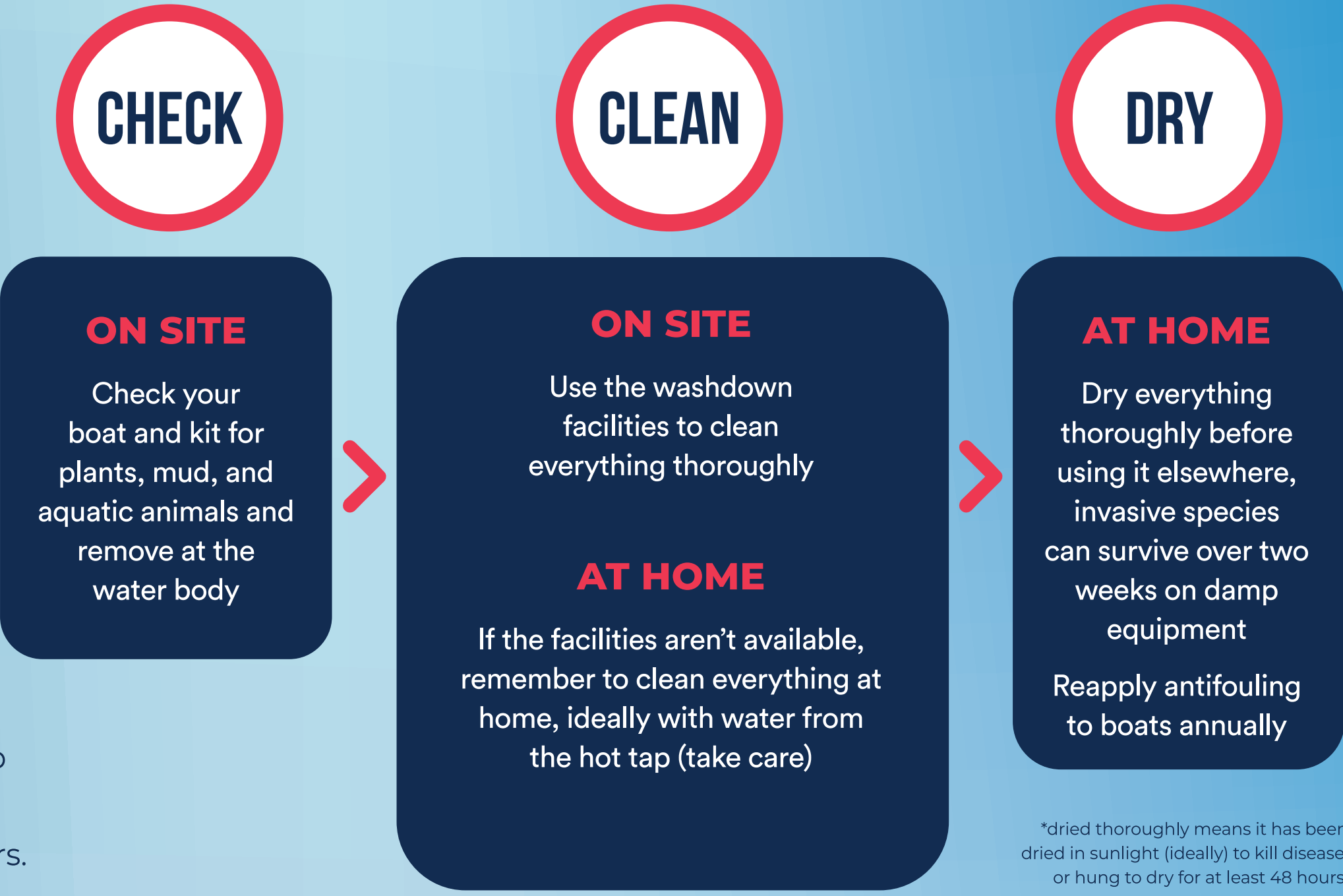


AFTER YOU LEAVE THE WATER

PROTECT YOUR WATERS

Invasive non-native species are a threat to our waters and the activities you enjoy. You could be unknowingly carrying them on your damp boat, equipment and clothing.

These facilities have been provided to help you keep your kit free of invasive species. Thank you for helping to protect our waters.



*dried thoroughly means it has been dried in sunlight (ideally) to kill disease, or hung to dry for at least 48 hours.

WHAT ARE INVASIVE NON-NATIVE SPECIES?

Non-native species are plants and animals that are not normally found in UK waters and have been accidentally or intentionally introduced by people. Some of these are invasive and pose a threat to our native species, habitats and hobbies.

Below are a few examples of their impacts:



Freshwater plants like floating pennywort block waterways preventing paddling, boating and fishing

Tiny invasive mussels form dense colonies which can cover the underside of boats and clog propellers



Diseases such as Koi Herpes Virus kill fish and can close fisheries

DID YOU KNOW

Invasive non-native species can survive out of water on damp clothing and equipment for over 14 days?